

PART OF THE S.E. 1/4 OF
SECTION 17, T.6N.,R.1W., S.L.B.&M.

IN OGDEN CITY

SCALE 1" = 50'

TAXING UNIT: 25

ALSO SEE P. 79-2

730.8' N88°57'30"W & 839.30'
50'48"W FR. N.E. COR. OF S.E. 1/4

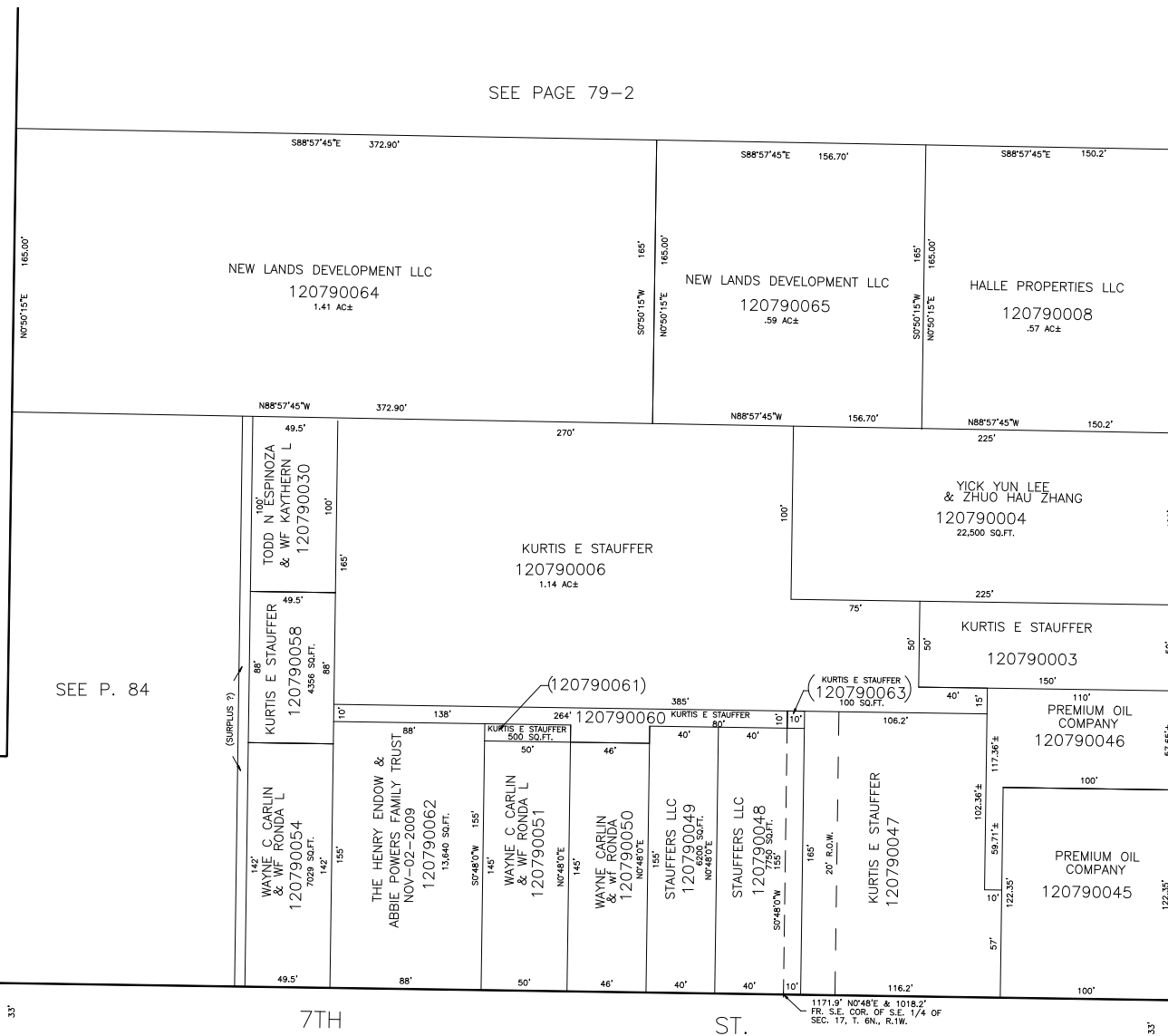
SEE PAGE 79-2

AVE.

GRANT

33'

N0°50'15"E



66'

S. 1003.86'

736.56' W. &
1003.86' S.
FR. N.E. COR.

BLVD.

S. 1150.5'

750' W. &
1150.5' S.
FR. N.E. COR.

DEED = N0°48'0"E

SEE

P.

82

WASHINGTON

CITY = N0°50'15"E

SEE P. 84

(SURPLUS ?)

7TH

ST.

344.5' W FR. W. LINE OF
WASH. BLVD.

S89°9'45"E

1171.9' N0°48'E & 1018.2'
FR. S.E. COR. OF S.E. 1/4 OF
SEC. 17, T. 6N., R. 1W.